

Rotary Feeder

Make: Meyer

Model: 26X26HDX Feeder

Industry: Power Generation: Coal Fired Power Plant

Challenge

A rotary feeder application in the scrubber area between the ash silo and ash slurry tank constantly leaked ash. This created an environmental and safety concern due to ash coating the environment. Packing had to be replaced weekly, significantly increasing maintenance costs and downtime. The plant was frustrated and desperate for a solution that worked.

Solution

An Inpro/Seal® Air Mizer® shaft seal was installed in July of 2018. The Air Mizer is a non-contacting, non-wearing shaft seal that uses a positive air purge to permanently eliminate leakage.

Result

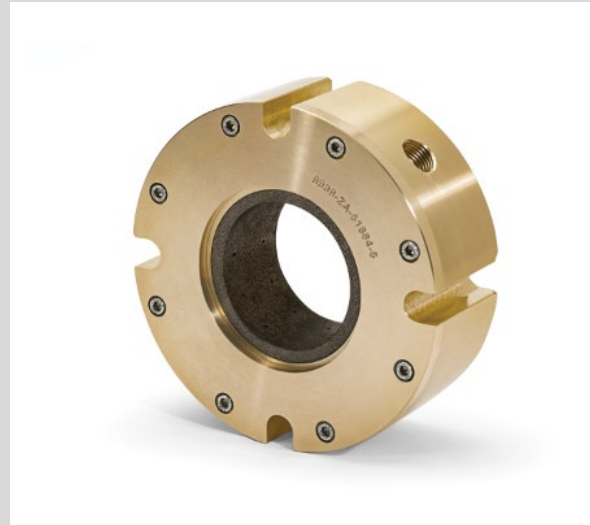
The plant stated that success would be measured by a seal that could go one month without leaking. The Inpro/Seal Air Mizer shaft seal has ran maintenance free, with zero leakage, since installation.



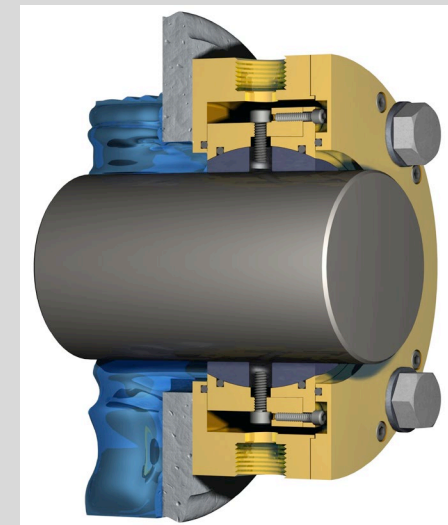
Before: Ash leaking from a rotary feeder



After: Air Mizer shaft seal installation



Inpro/Seal Air Mizer shaft seal



Air Mizer Cutaway